

Measurements (or estimates) must be recorded for each week

Date: [ ] [ ] [ ]  
DD MM YY

Course Code: [ ]

Course: [ ]

Crust:  A - NO CRUST (INCLUDE LIGHT SURFACE GLAZE)  
 B - LIGHT CRUST  
 C - CRUST STRONG ENOUGH TO SUPPORT A MAN ON SNOWSHOES

Depth Measurement (cm):

STN. [ ] [ ] [ ] [ ] [ ] [ ] [ ] [ ] [ ] [ ] Avg: [ ]  
1 2 3 4 5 6 7 8 9 10

CONTINUE MEASUREMENTS UNTIL ALL SNOW GONE

Check appropriate box:

DEER MOVEMENTS

DEER MORTALITY

MAJOR WEATHER FOR PAST WEEK

- 0-UNRESTRICTED
- 1-SLIGHTLY RESTR.
- 2-RESTRICTED
- 3-SEVERE

- 0-NONE
- 1-LOW
- 2-MODERATE
- 3-HIGH

Describe major abnormal conditions which cannot be determined from the data (eg.: Storm, blizzard abnormal thaw). {Enter Moose comments here}

SPG (cm) [ ] [ ] [ ] [ ] [ ] [ ] [ ] [ ] [ ] [ ] Avg: [ ]

SGP (HEPBURN'S SNOW PENETRATION GAUGE):

Set POGO STICK on surface of snow and press to the collar and measure depth of penetration.

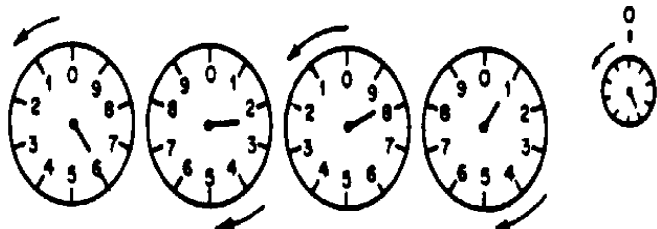
CHILLOMETER: Mark position of indicator for each dial:

CONTINUE READING UNTIL WEEK 27 (11 APRIL) OR LATER IF SNOW REMAINS

CHILLOMETER: [ ] [ ] [ ] [ ] [ ] [ ] [ ] [ ]

PREVIOUS READING: [ ] [ ] [ ] [ ] [ ] [ ] [ ] [ ]

WEEKLY DIFF: [ ] [ ] [ ] [ ] [ ] [ ] [ ] [ ]



Recommend that water temperatures be checked every 2 weeks: [ ] °C